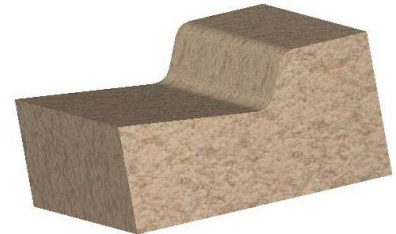
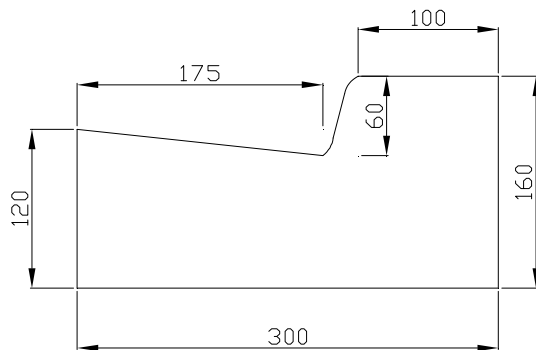
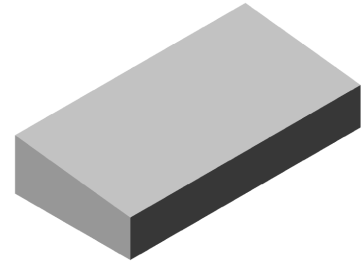
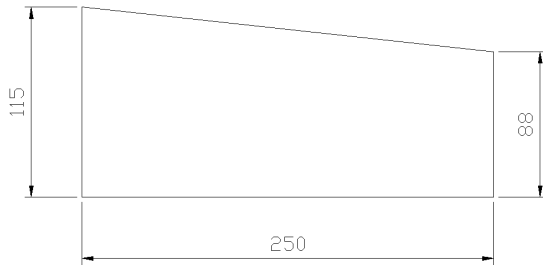


Rigola y Canaleta de Hormigón.

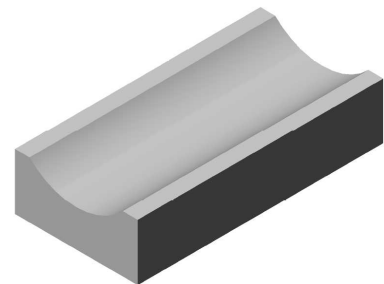
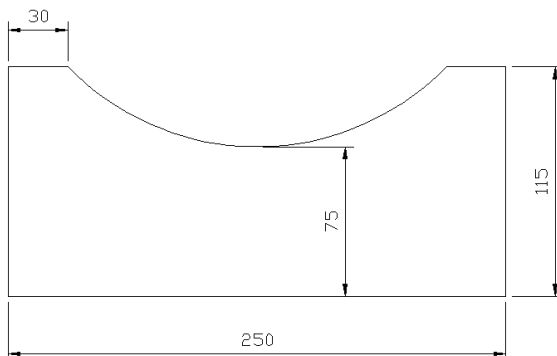
Realizados a base de cemento, áridos varios y agua.

RIGOLAS DE HORMIGÓN



DENOMINACIÓN PRODUCTO	DIMENSIONES (mm)				PESO (Apróx.) Kg
	Largo	Base	Alto 1	Alto 2	
RIGOLA GRIS 50x25x11x8 BICAPA	500 ±5	250 ±10	115 ±6	88 ±4	29
RIGOLA BR-30 GRIS 33x30x16x12 MONOCAPA	330 ±5	300 ±10	160 ±6	120 ±4	30

CANALETA DE HORMIGÓN



DENOMINACIÓN PRODUCTO	DIMENSIONES (mm)				PESO (Apróx.) Kg
	Largo	Base	Alto 1	Alto 2	
CANALETA GRIS 50x25x10x7	500 ±5	250 ±10	115 ±6	75 ±4	27
CANALETA 50x25x10x7 BLANCA	500 ±5	250 ±10	115 ±6	75 ±4	27